

KEY	
KEY	DESCRIPTION
AC	AIR CONDITIONING CONDENSER. WHERE ON BALCONY CONCEAL IN FULL HEIGHT VENTILATION CUPBOARD WITH LOUVER DOORS.
BIR	BUILT IN ROBE
BL	BOLLARD
BR	BROOMY/TALL CUPBOARD
BW	STEEL FRAMED BALUSTRADE WALL - SHS COLUMNS AD BEAMS CLAD WITH PREFINISHED CFC SHEETING. SB-2 FIXED ATOP BW.
CH	TRIPLE WASTE CHUTE SYSTEM
CJ	CONSTRUCTION JOINT
COL.	STRUCTURAL CONCRETE COLUMN TO ENG'S DTLs
CT	COOKTOP (GAS)
D.#	DOOR. REFER DOOR TYPE SCHEDULE WD.A.601 FOR DTLs OF DOOR TYPES
DC200	90/90/90 FRL. REFER ENG'S DTLs. REFER ACOUSTIC ASSESSMENT BY VIPAC FOR UNDERLAY AND INSULATION REQUIREMENTS
DC250	120/120/120 FRL. REFER ENG'S DTLs. REFER ACOUSTIC ASSESSMENT BY VIPAC FOR UNDERLAY AND INSULATION REQUIREMENTS
DM	DOORMAT
DR	MACHINE DRYER SPACE
DW	DISHWASHER
ECR	ELECTRICAL & COMMUNICATIONS RISER CUPBOARD
FC	FEATURE ARCHITECTURAL COLUMN TO ENG'S DTLs
FH	FIRE HYDRANT RISER
FIP	FIRE INDICATOR PANEL
FT	FLOOR TRAP
FTR	FASCIA TRUSS TO ENG'S DTLs
GA	IN-GROUND GREASE ARRESTOR
GL	GLASS FULLY FRAMED BALUSTRADE TO 1050mm AFL HARKK VIEW SYSTEM OR SIMILAR
GL-O	OPAQUE GLAZED BALUSTRADE - HARKK PRIVACY WITH HANDRAIL SYSTEM OR SIMILAR
HR	50mm HANDRAIL IN STAIR FIXED TO CENTRAL PRECAST WALL. HEIGHT MIN 865mm ABOVE NOSING.
HR-L	50mm HANDRAIL AND BALUSTRADE IN STAIR ON LANDING. HEIGHT MIN 1000mm ABOVE FFL.
L	LINEN CUPBOARD
LD	LINEAR DRAIN
LVR	VERTICAL PRIVACY LOUVRE AS PER DTLs ON WINDOW SCHEDULE WD.A.600
MSB	MAIN SWITCH BOARD
NBN	NBN/DATA CABINET
OBS	OVER BONNET STORAGE UNIT - 1000mm CLEAR - 1100h x 2400w x 810d (TOTAL HEIGHT 2320)
OF	OVERFLOW DEVICE AS DETAILED IN BOX GUTTER TABLE
P	PANTRY CUPBOARD
PC-B	PRECAST CONCRETE PIGMENTED TO DARK GREY COLOUR TO SELECTION
PC-N	PRECAST CONCRETE WITH NO PIGMENT - NATURAL COLOUR TO SELECTION
PC-W	PRECAST CONCRETE PIGMENTED TO OFF-WHITE COLOUR TO SELECTION
PJ	PANEL JOINT - REFER ENG'S DWGS FOR DTLs
PL	GRC PLANTER BOX. MIN HEIGHT 800mm AFL W. NO FOOTHOLDS
R	REFRIGERATOR SPACE
RC	RECESSED CEILING AT DOORS AND WINDOWS FOR CONCEALED CURTAIN TRACK OR BLIND PELMET
RH	RANGEHOOD WITH DUCTING TO OUTSIDE
RWT	RAINWATER TANK - REFER CIVIL PLANS FOR DTLs
SB-1	100mm WIDE HORIZONTAL FLAT STEEL BALUSTRADE TO INTERNAL WALKWAYS 1050mm AFL
SB-2	STEEL FRAMED BALUSTRADE ATOP "BW" TO WEST ELEVATION - SEE SECTION DETAIL "BALCONY EDGE - WEST" FOR DETAILS. 600h FOR A TOTAL BALUSTRADE HEIGHT OF 1600mm AFL
SB-3	100mm WIDE VERTICAL FLAT STEEL SCREEN TO EAST FACING FIRST FLOOR BALCONIES. 700w x 1700h.
SHS	SHS COLUMN TO ENG'S DTLs
ST	FEATURE STEEL COLUMNS TO ENG'S DTLs
TGSI	TACTILE GROUND SURFACE INDICATORS INSTALLED IN ACCORDANCE WITH D3.8 OF BCA & AS 1428.4.1
UBO	UNDER BENCH OVEN
W.#	WINDOW. REFER WINDOW TYPE SCHEDULE WD.A.600 FOR DTLs OF WINDOW TYPES.
WASTE CH.	WASTE CHUTE IN RISER, FIRE RATED TO 1HR, HOPPER DOORS 1HR FIRE RATING
WIR	WALK IN ROBE
WM	WASHING MACHINE SPACE WITH FLOOR TRAP UNDER AND TAPS
WO	WALL OVEN
WS	WHEEL STOP TO CIVIL DTLs

BOX GUTTER & DRAINAGE KEY	
KEY	DESCRIPTION
100Ø DP	DP1, DP2, DP3, DP6, DP7, DP8, DP9, DP10, DP11, DP13, DP14, DP15, DP16, DP17
150Ø DP	DP4, DP5, DP12
BG1	600mm WIDE x 135mm DEEP MIN BOX GUTTER. 3 x GUTTER SUMPS AS SHOWN ON ROOF PLAN @ 600mm WIDE BY 600mm LONG AND 150mm DEEP MINIMUM. DOWNPIPES FROM SUMPS Ø100. SIDE OVERFLOWS 450mm WIDE x 55mm HIGH MIN.
BG2	600mm WIDE x 120mm DEEP MIN BOX GUTTER. 2 x GUTTER SUMPS AS SHOWN ON ROOF PLAN @ 600mm WIDE BY 600mm LONG AND 155mm DEEP MINIMUM. DOWNPIPES FROM SUMPS Ø150 WITH OVERFLOW PIPES NEXT TO @ Ø150.
BG3	600mm WIDE x 125mm DEEP MIN BOX GUTTER. 3 x GUTTER SUMPS AS SHOWN ON ROOF PLAN @ 600mm WIDE BY 600mm LONG AND 150mm DEEP MINIMUM. DOWNPIPES FROM SUMPS Ø100. SIDE OVERFLOWS 450mm WIDE x 50mm HIGH MIN.
BG4	600mm WIDE x 110mm DEEP MIN BOX GUTTER. 2 x GUTTER SUMPS AS SHOWN ON 3RD FLOOR PLAN @ 600mm WIDE BY 600mm LONG AND 150mm DEEP MINIMUM. DOWNPIPES FROM SUMPS Ø100. SIDE OVERFLOW TO WEST OF GUTTER - 450mm WIDE x 50mm HIGH MIN.
BG5	600mm WIDE x 130mm DEEP MIN BOX GUTTER. 1 x GUTTER SUMP AS SHOWN ON 2ND FLOOR PLAN @ 600mm WIDE BY 600mm LONG AND 150mm DEEP MINIMUM. DOWNPIPE FROM SUMP Ø150. OVERFLOW TO EAST OF GUTTER - 450mm WIDE x 70mm HIGH MIN.

REVISIONS		
ISSUE #	DATE	DESCRIPTION
A	25/03/2019	FOR BRC APPROVAL
B	14/05/2019	REVISED SET BASED ON BRC RFI PC59515

This drawing shows design modifications proposed by Gemma and approved by the client. It is intended to be used in conjunction with the original drawing and any other drawings or specifications issued by the client. It is not to be used for any other purpose without the written consent of the designer.

ROOF PLAN NOTES

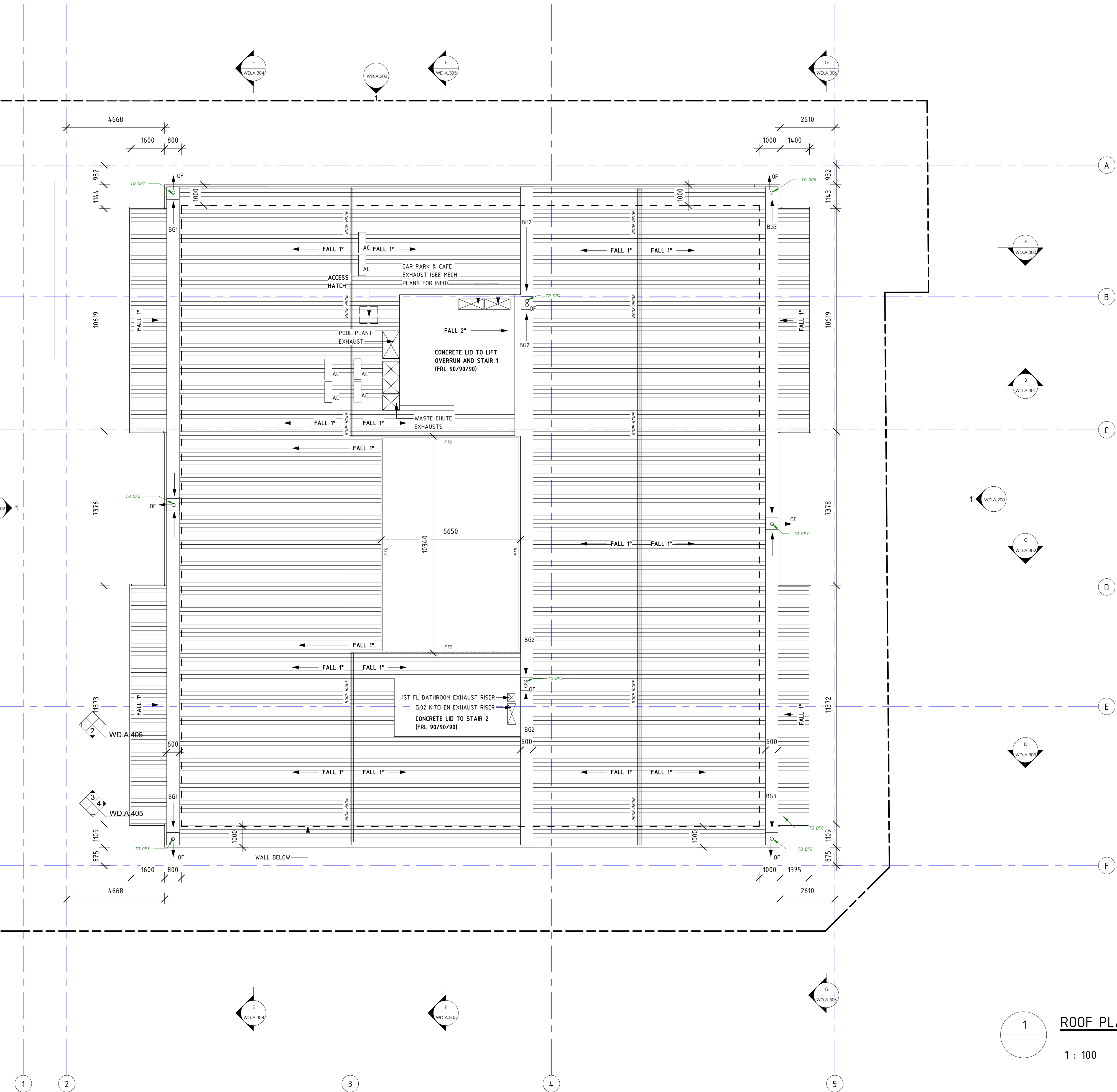
ANCHORAGES FOR SAFETY HARNESSES SHALL BE DESIGNED AND INSTALLED IN ACCORDANCE WITH AS/NZS 1891.4 AND BE CONSTRUCTED OF CORROSION RESISTANT MATERIAL.

PROPRIETARY FIBREGLASS ROOF WALKWAY SYSTEM AND FALL ARREST SYSTEM DESIGNED AND INSTALLED IN ACCORDANCE WITH AS1657.

PROVIDE STEEL PLATFORMS FOR ROOF MOUNTED AIR CONDITIONING UNITS. SIZE TO BE CONFIRMED BY AC CONTRACTOR. STRUCTURE OF AC PLATFORMS TO ENG'S DTLs

NO FIRE RATING REQUIRED TO UNDERSIDE OF ROOF FRAME.

CONCRETE LIFT AND STAIR LIDS SHOULD HAVE MINIMUM FRL OF 90/90/90



PROJECT ADDRESS
248 UNLEY ROAD HYDE PARK

HYDE PARK PLACE - STAGE A

CLIENT
HYDE PARK PLACE PTY LTD



SHEET
ROOF PLAN

WD.A.109

AUTHOR
GB

CURRENT REVISION
REVISED SET BASED ON
BRC RFI PC59515

ISSUE DATE
29/06/2019

FOR TENDER

GEMMA

LEA
DESIGN STUDIO

www.gemmalea.com.au
gemma@gemmalea.com.au
ABN: 59 662 391 538